



Jinan Bodor CNC Machine Co., Ltd.

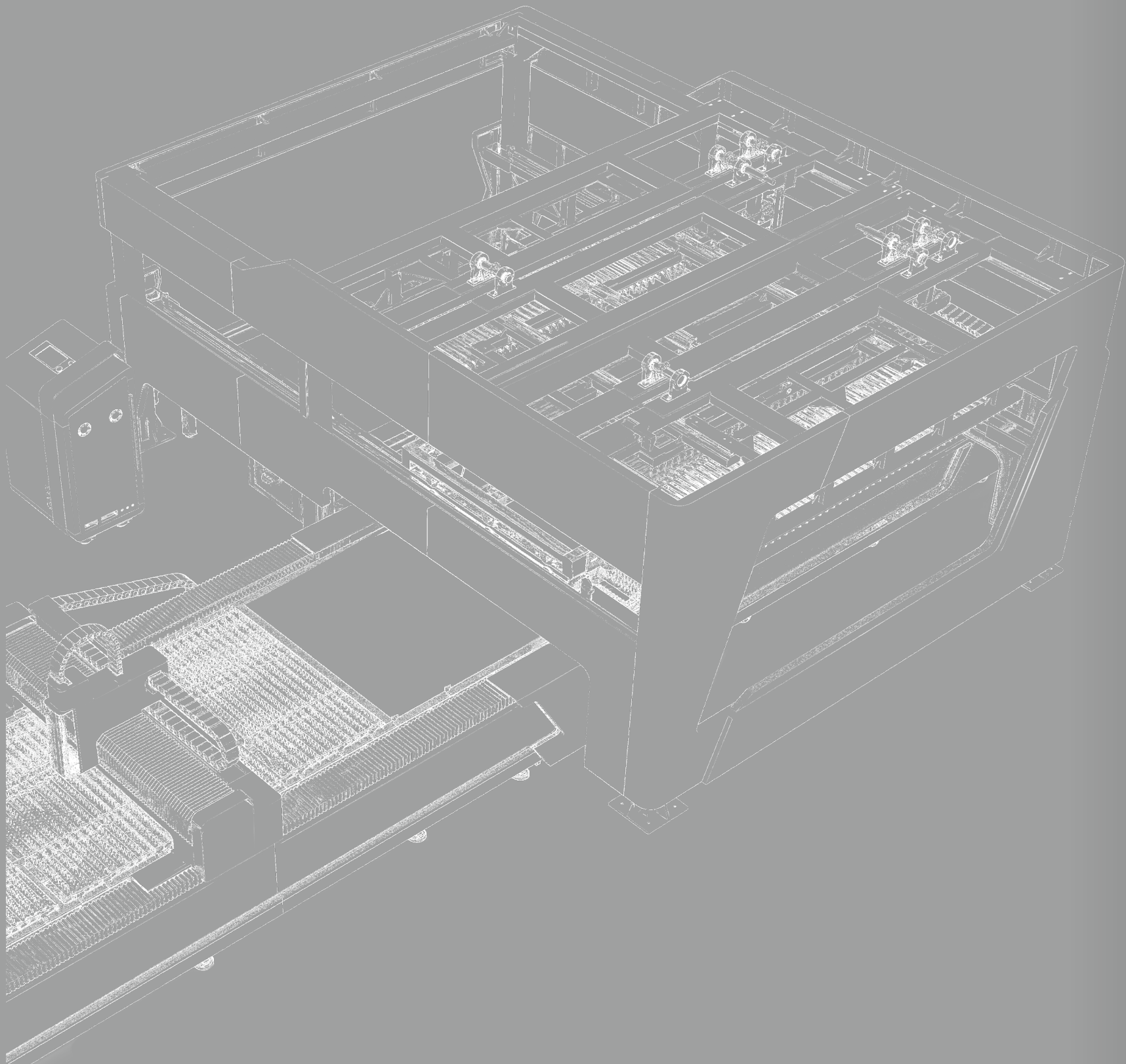
Office Add: No.1299 Xinluo Ave, High-tech Zone, Jinan, China.

Bodor Laser R&D And Production Base: No.1000 Chunbo Road, Gaoxin East District, Jinan, China.

Web: www.bodor.com Tel: +86-531-88690051 Email: sales@bodor.com







CONTENTS

- 01 COMPANY
- 02 CORE TECHNOLOGY
- 05 HIGHER POWER, HIGHER EFFICIENCY
- 06 SHEET METAL LASER CUTTING MACHINE
DREAM S Series P Series C Series G Series A Series i Series
- COIL LASER CUTTING MACHINE
R Series
- TUBE LASER CUTTING MACHINE
M Series X Series T Series K Series
- SHEET AND TUBE LASER CUTTING MACHINE
PT Series CT Series AT Series
- 14 AUTOMATION DEVICES
- 16 CUTTING SAMPLES
- 17 PROCESS PARAMETERS
- 19 BODOR QUALITY
- 20 BODOR SERVICES
- 21 BODOR CLOUD



Bodor Laser is an international company committed to R&D, production, and marketing of laser cutting machines. In the 12 years since its establishment, Bodor Laser has set up complete marketing and service networks all around the world to provide its customers the best product and service experience.

51000m²

Super factory

2000

Employees

200+

R&D engineers

300+

Service engineers

180

Countries covered

10+

Global branches

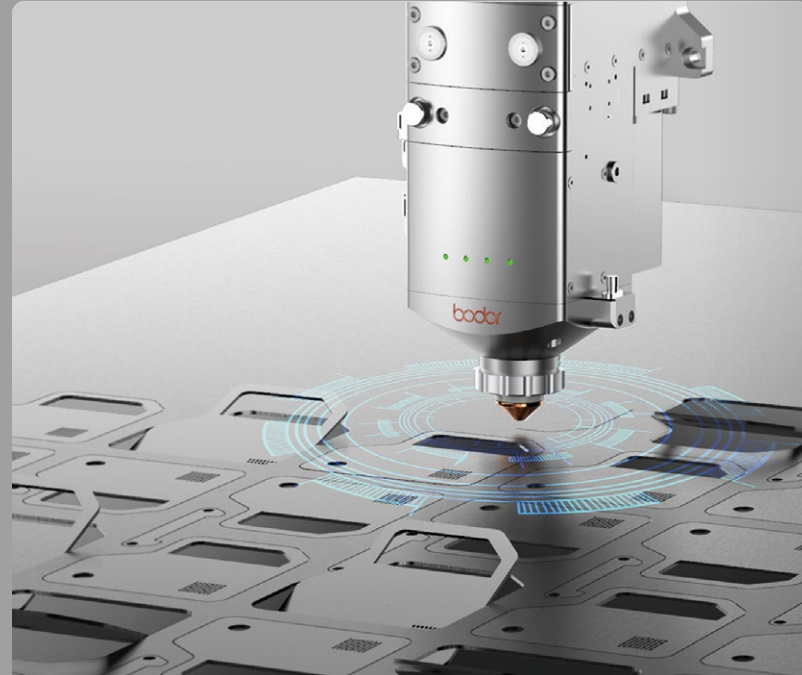
4

Global technical centers

CORE TECHNOLOGY

Active Anti-collision Function

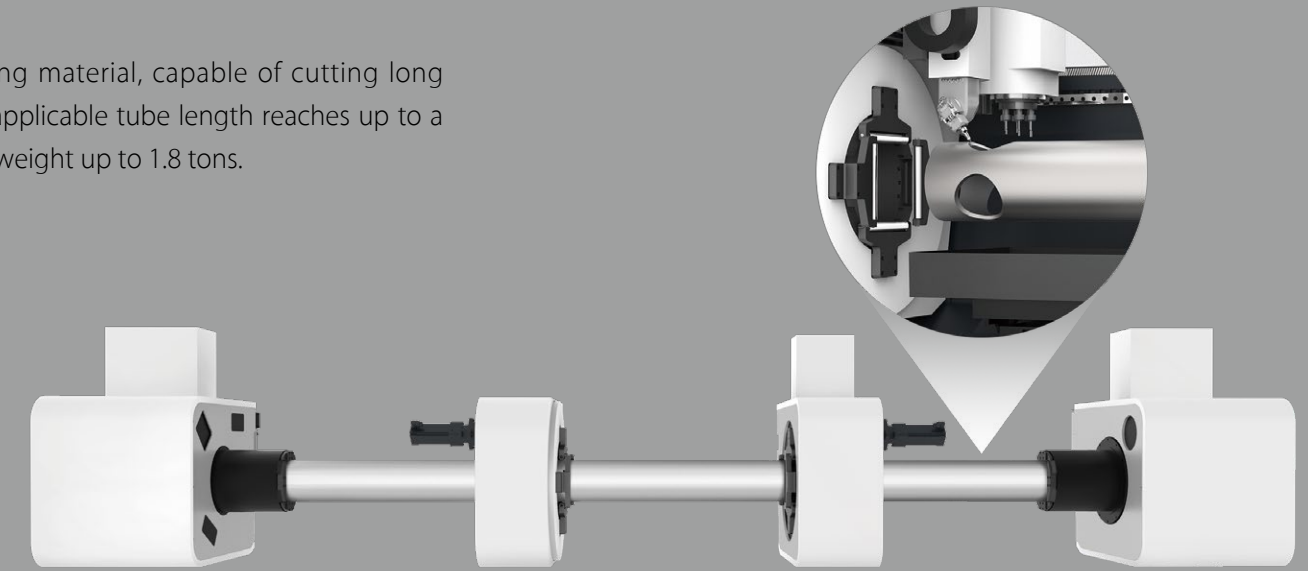
Recognition of obstacles such as warping workpieces in advance, avoidance of laser head damage, and assurance of continuous production.



01

Four Chucks

No waste of the cutting material, capable of cutting long and heavy tubes. The applicable tube length reaches up to a maximum of 12m and weight up to 1.8 tons.



03

Automatic Nozzle Changer

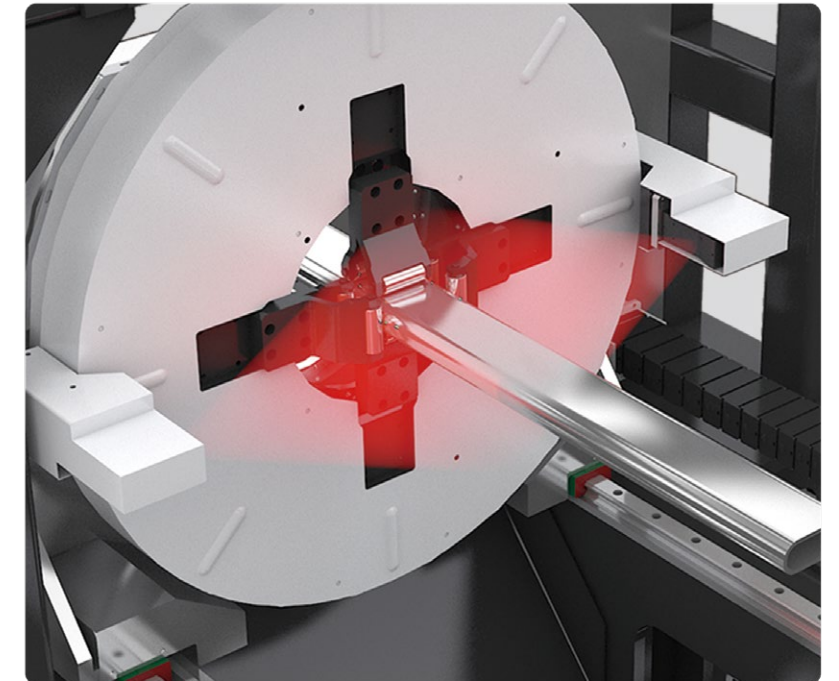
Processing is achieved automatically by adapting suited nozzles, cleaning, and automatically calibrating according to the different cutting processes.



02

Contour Recognition

0.8s of the tube center recognition and automatic tube accuracy compensation, making tube cutting fast and accurate.

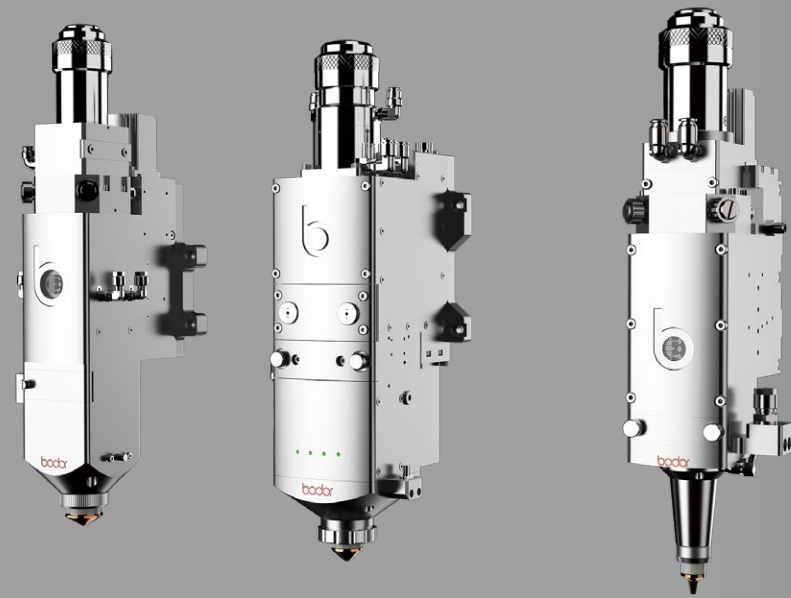


04

Bodor Genius

Bodor Laser Head:
Carrying a wide focus range for cutting various materials

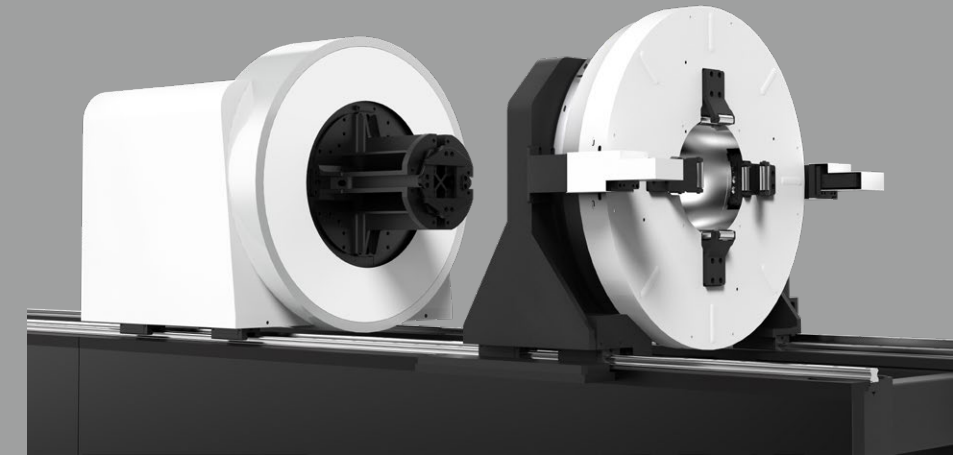
Sharp-pointed Laser Head:
Made for diminishing tail materials, more convenient processing of special-shaped tubes, quicker follow-up response, and no collision.



05

Electric Self-centering Chuck

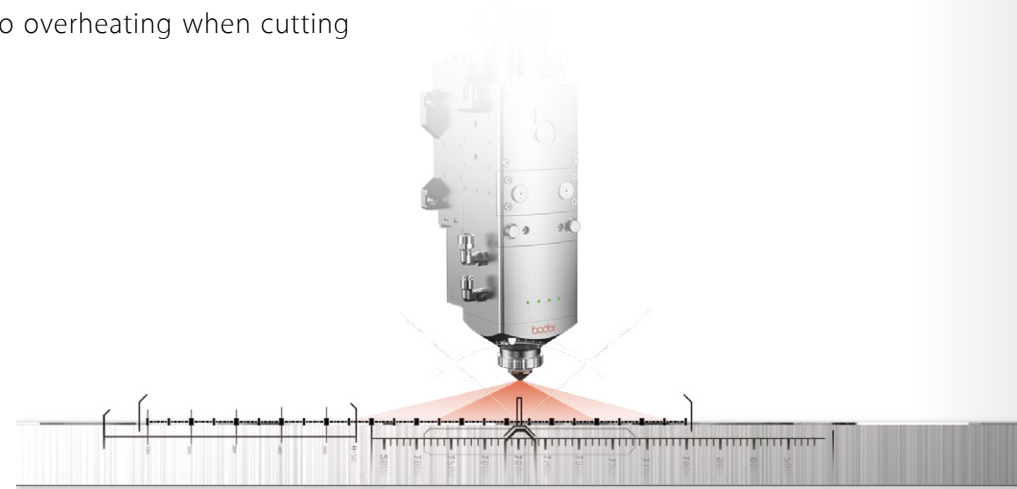
Controlling the position and torque of the chuck, capable of clamping various types of tubes including thin-walled tubes with high precision.



07

Intelligent Over-heat Adaptation

Through identifying lens focal length change and adjusting focus automatically, the technology corrects the focus drift due to overheating when cutting medium and thick sheets.



06

BodorNest Tube

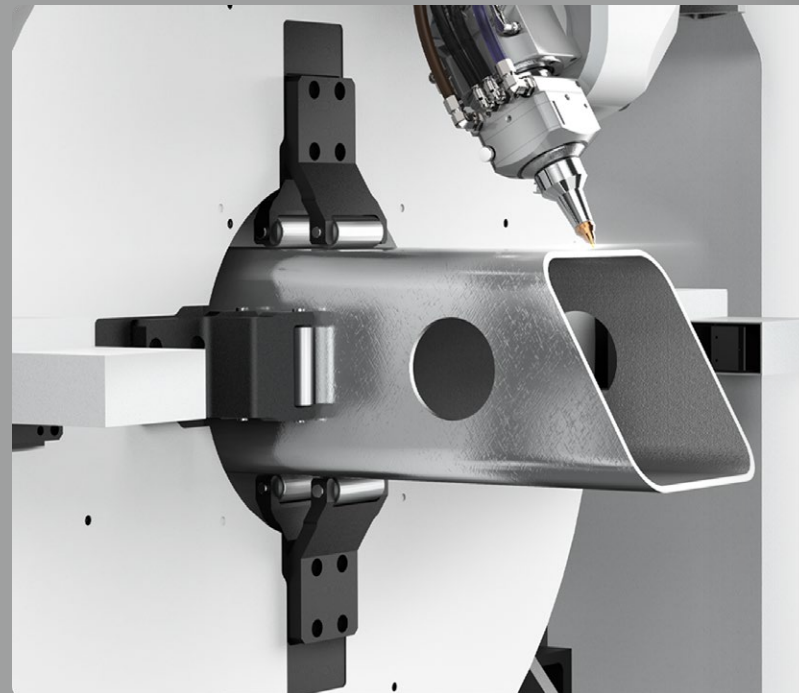
The system, presenting convenient layout and processing all the time even when offline, applies to groove steel, I-shaped steel, and other special-shaped tubes and is accessible for third-party machine tools.



08

Tube Bevel Cutting

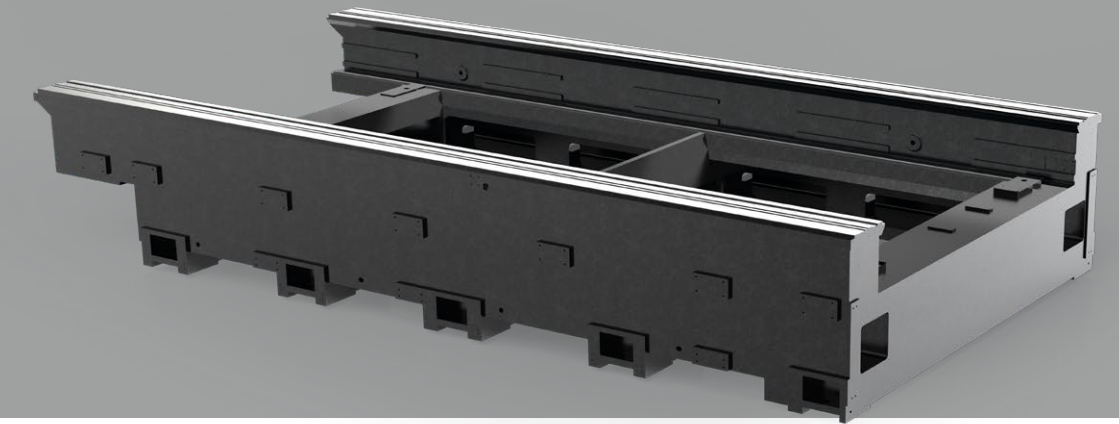
Thanks to the 3D cutting head, the bevel cutting is suitable for various types of tubes, achieving seamless splicing of tubes.



09

Mineral Machine Bed

Using mineral marble, the original resistance to thermal radiation and its heavy body of excellent stability perform incomparable vibration absorption, vibration resistance, and a longer life cycle with no deformation.



11

Bodor Thinker4.0

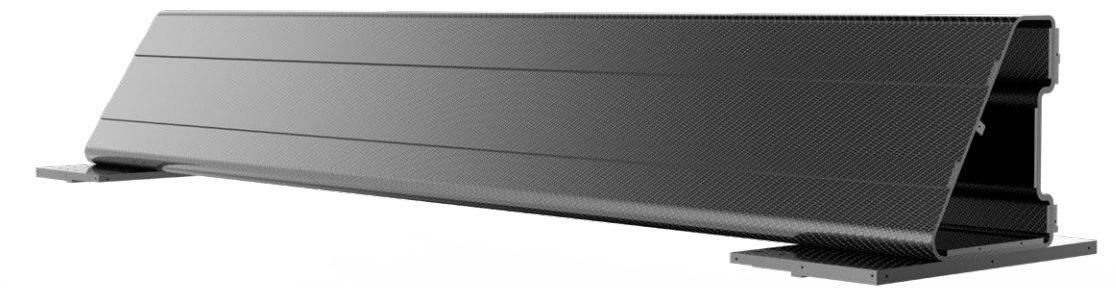
Faster response and more faithful accuracy due to the bus control system for laser cutting, an intensive development based on Beckhoff.



10

Carbon Fiber Crossbeam

The crossbeam made of carbon fiber by vacuum hot pressing adopts the typical mechanical stable structure of triangular prism, with ultra-low density, lighter weight, and stronger rigidity, so that the dynamic performance is perfect without deformation.



12

HIGHER POWER, HIGHER EFFICIENCY

2019

In 2019, World Premiere of the 25000w and 30000w laser cutting machines

2020

In September 2020, World Premiere of the 40000w laser cutting machine
 In November 2020, delivery of the world's first batch of 30000w laser cutting machines

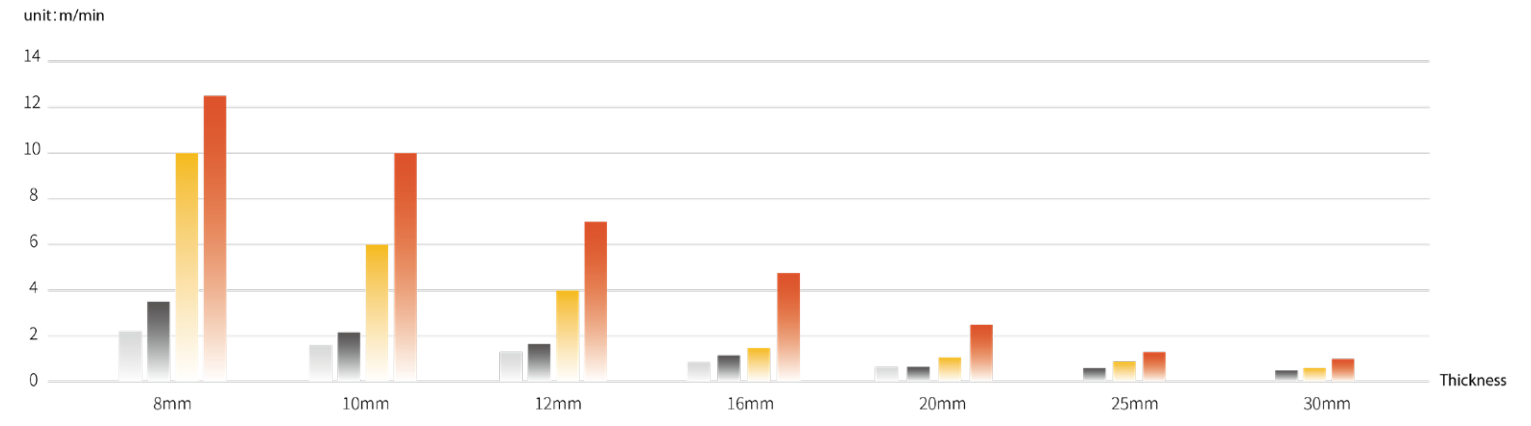
2021

Till June 2021, sales volume of ultra-high-power laser cutting machines(over 10kw) has exceeded 600 units

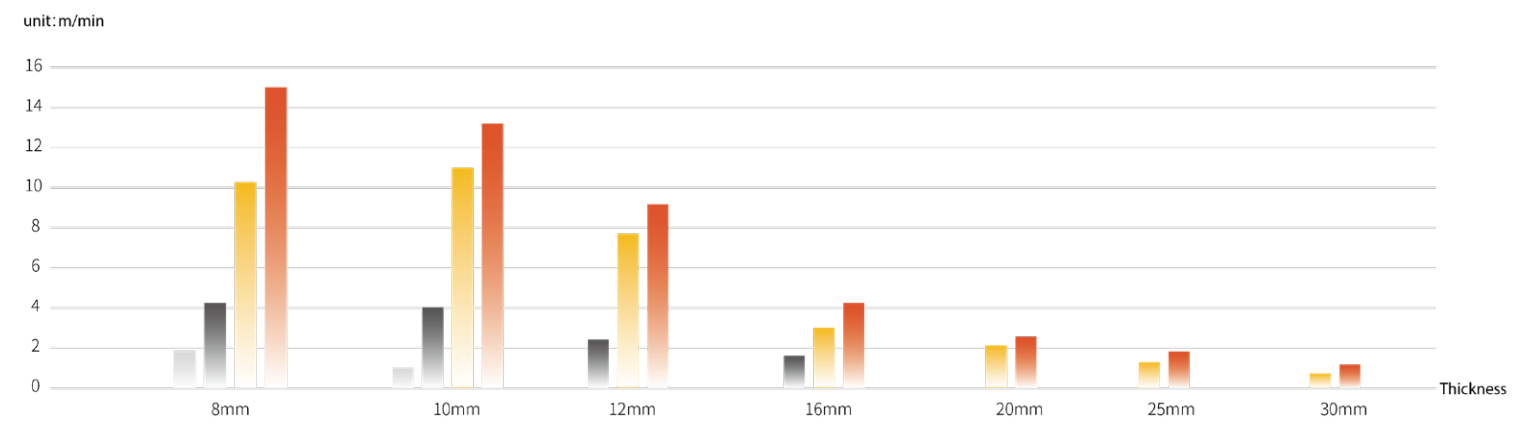


Carbon steel cutting speed comparison

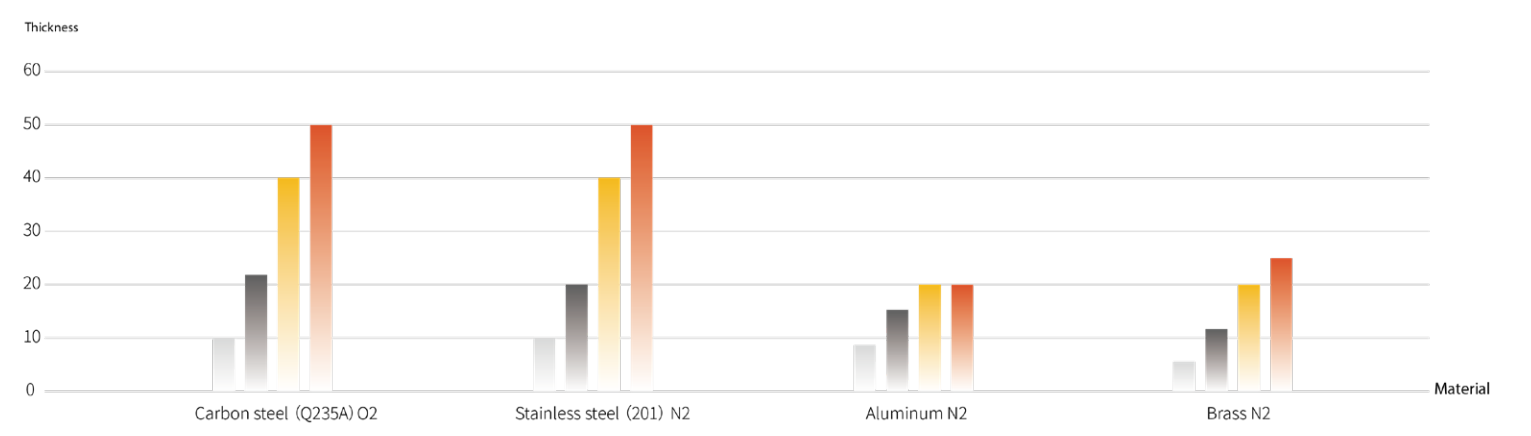
3000W 6000W 12000W 20000W



Stainless steel cutting speed comparison

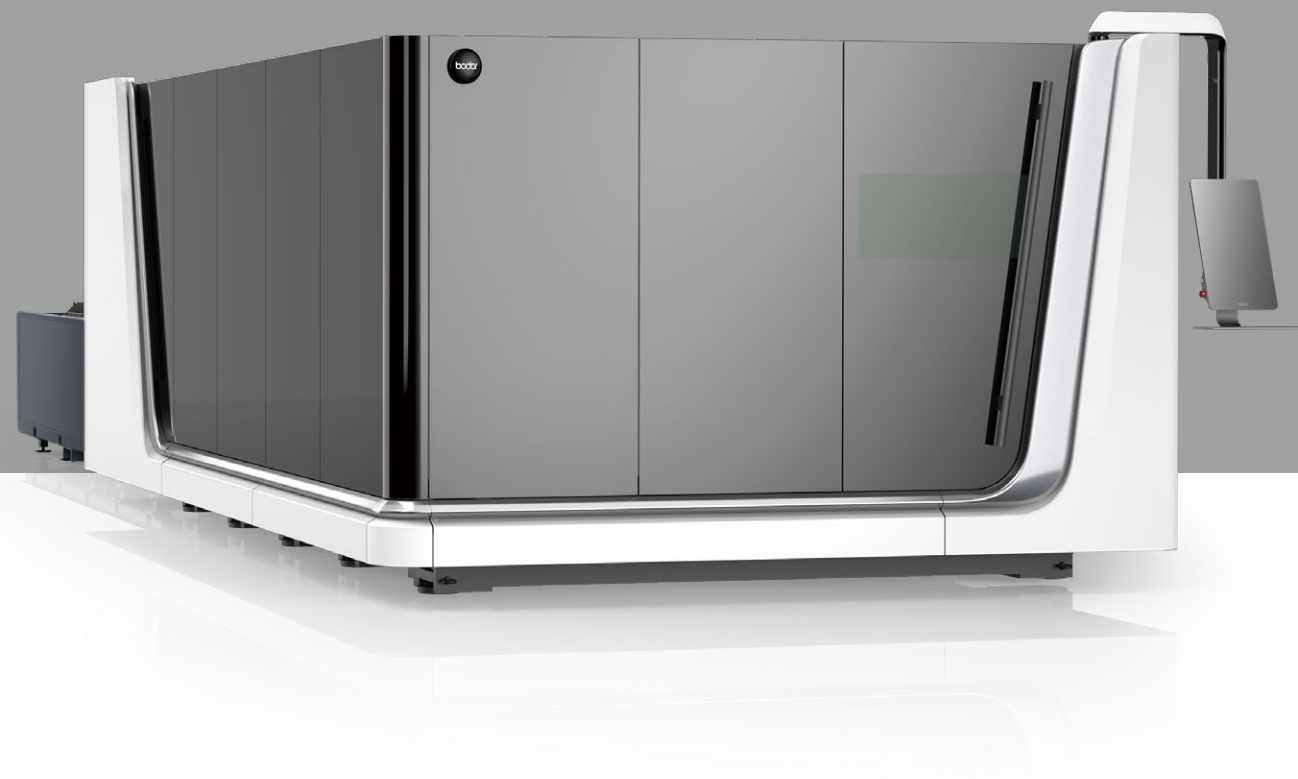


Cutting thickness comparison



DREAM

Top configuration in the industry:
Maglev Linear Motor, Marble Machine Bed, Carbon Fiber Crossbeam



Technical Parameters

Model	Dream6	Dream4	Dream3
Working Area	6100*2500mm	4000*2000mm	3048*1524mm
Laser Power	40000w/30000w/20000w/12000w/6000w		
X/Y-axis Positioning accuracy	0.05mm		0.03mm
X/Y-axis repositioning accuracy	0.03mm		0.02mm
Max. linkage speed	200m/min		

S

Flagship sheet metal laser cutting machine with maximum efficiency and cutting quality

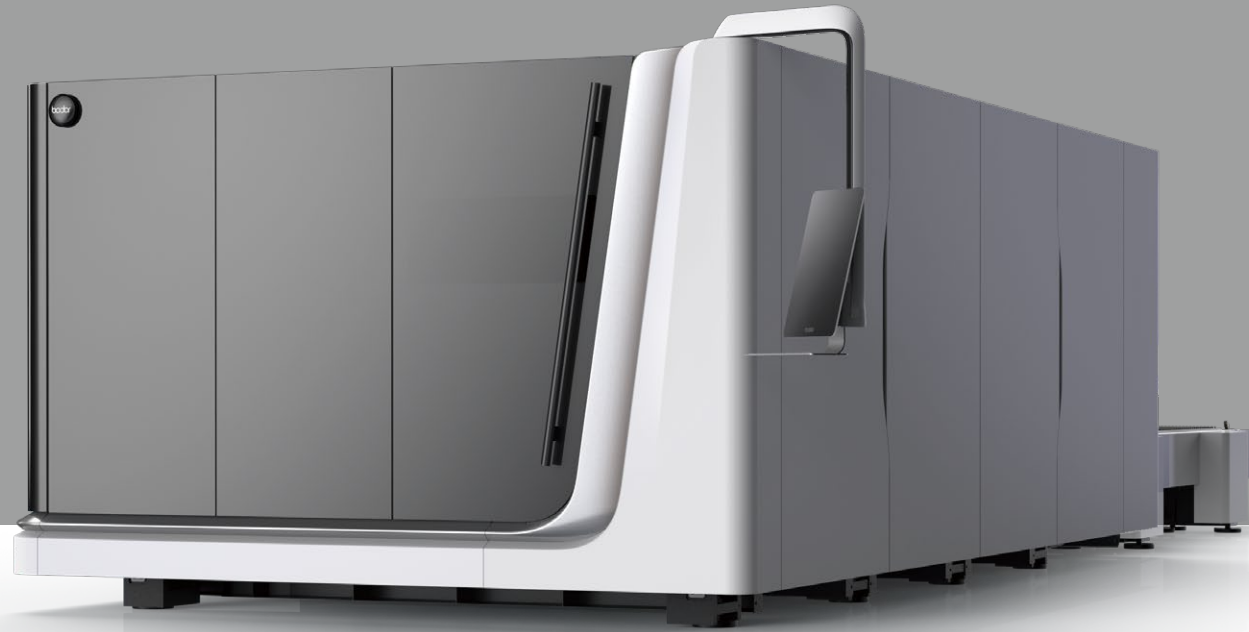


Technical Parameters

Model	S4	S3
Working Area	4000*2000mm	3048*1524mm
Laser Power	40000w/30000w/22000w/20000w/12000w/6000w	
X/Y-axis Positioning accuracy	0.05mm	0.03mm
X/Y-axis repositioning accuracy	0.03mm	0.02mm
Max. linkage speed	200m/min	

P

Dual exchange platform with cast iron bed and protective cover, representing perfect efficiency, stability, and environmental protection



Technical Parameters

Model	P8	P6	P6 Lean	P4	P3
Working Area	8100mm*2500mm	6100mm*2500mm	6100mm*2000mm	4000mm*2000mm	3048mm*1524mm
Laser Power	40000w/30000w/20000w/12000w/6000w/3000w/2000w/1500w				
X/Y-axis Positioning accuracy	0.05mm				0.03mm
X/Y-axis repositioning accuracy	0.03mm				0.02mm
Max. linkage speed	169m/min				140m/min

C

The mortise-and-tenon bed for greater stability, the protective cover for higher safety

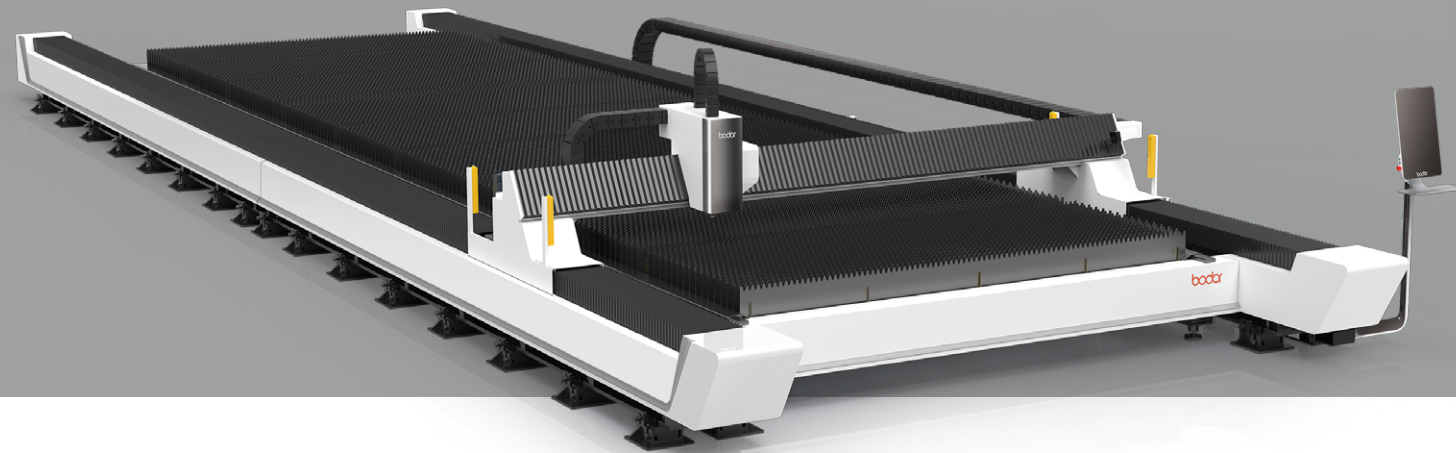


Technical Parameters

Model	C12	C8	C6	C4	C3
Working Area	12500mm*2600mm	8000mm*2500mm	6100mm*2500mm	4000mm*2000mm	3048mm*1524mm
Laser Power	40000w/30000w/20000w/12000w/6000w/3000w				
X/Y-axis Positioning accuracy	±0.05mm				
X/Y-axis repositioning accuracy	±0.03mm				
Max. linkage speed	110m/min				

G

Ultra large format laser cutting machine, super long workpiece processing

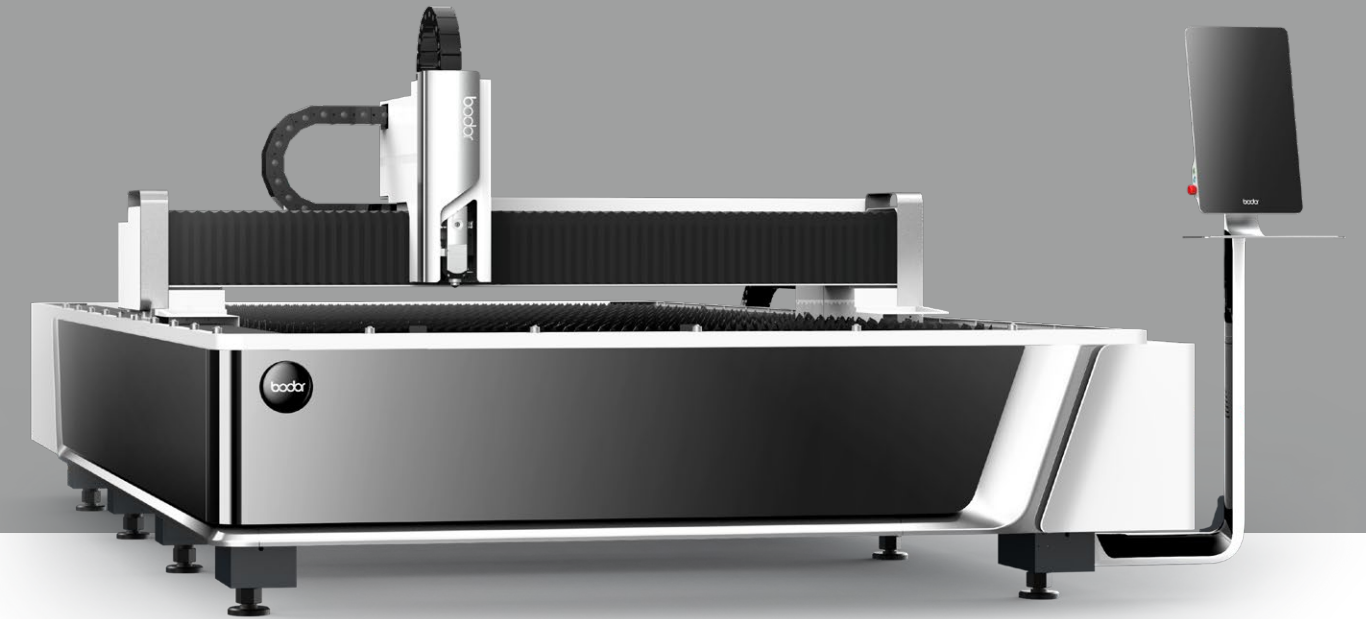


Technical Parameters

Model	G24	G20	G16	G12
Working Area	24500mm*3200mm	20500mm*3200mm	16500mm*3200mm	12500mm*3200mm
Laser Power	40000w/30000w/20000w/12000w/6000w			
X/Y-axis Positioning accuracy	0.02mm/m			
X/Y-axis repositioning accuracy	0.01mm/m			
Max. linkage speed	80m/min			

A

Easy installation and operation, stable machine bed with the mortise-and-tenon joint. The cost-effective processing convinces the investment.



Technical Parameters

Model	A14	A6 Plus	A6	A4 Plus	A4	A3
Working Area	14000mm*3100mm	6100mm*2500mm	6100mm*1524mm	4000mm*2000mm	4000mm*1524mm	3048mm*1524mm
Laser Power	20kw/12kw/6kw/3kw					
X/Y-axis Positioning accuracy	±0.05mm/m	±0.05mm				
X/Y-axis repositioning accuracy	±0.03mm	±0.03mm				
Max. linkage speed	91m/min					

i

The compact design with higher precision, speaking for highly precise processing



Technical Parameters

Model	i7	i5
Working Area	3048*1524mm	1000*1500mm
Laser Power	3000w/2000w/1500w	
X/Y-axis Positioning accuracy	±0.05mm	
X/Y-axis repositioning accuracy	±0.03mm	
Max. linkage speed	100m/min	60m/min

R

Fully automated unrolling, levelling, feeding and cutting, highly automated and integrated processing

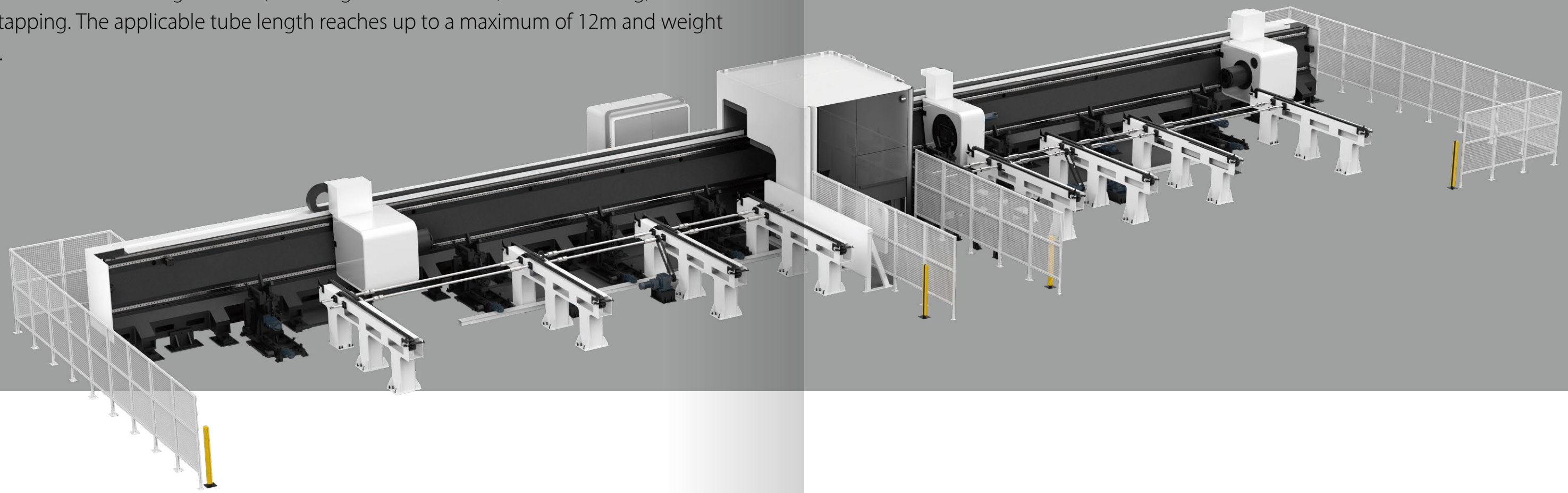


Technical Parameters

Model	R1500
Working Area	3048mm*1524mm
Coil O.D	φ1200~φ2000mm
Coil I.D	φ508/φ610mm
Single Coil Maximum Weight	≤20t
X/Y-axis Positioning Accuracy	0.03mm
X/Y-axis Repositioning Accuracy	0.02mm

M

Multifunctional Tube Laser Cutting Machine, ensuring no tail materials, 3D laser cutting, piercing, and tapping. The applicable tube length reaches up to a maximum of 12m and weight up to 1.8 tons.



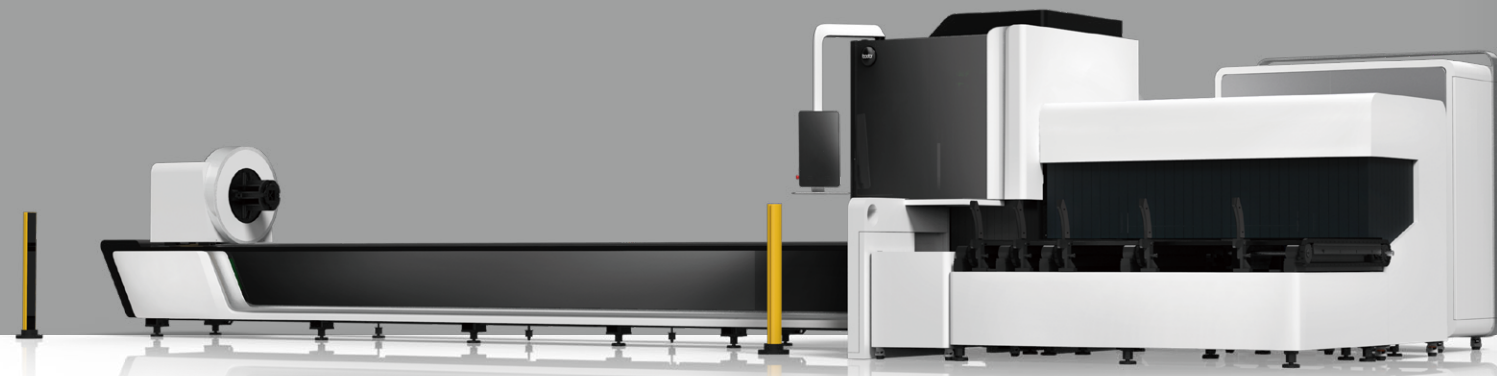
Technical Parameters

Model	M500
Maximum tube length	12000mm
Maximum Tube Weight	1800Kg
Laser Power	6000w/3000w/2000w/1500w
X/Y-axis positioning accuracy	0.06mm
X/Y-axis repositioning accuracy	0.04mm
Max. Chuck rotating speed	40r/min



X

Smart High-end Tube Laser Cutting Machine, available for 2D and 3D cutting

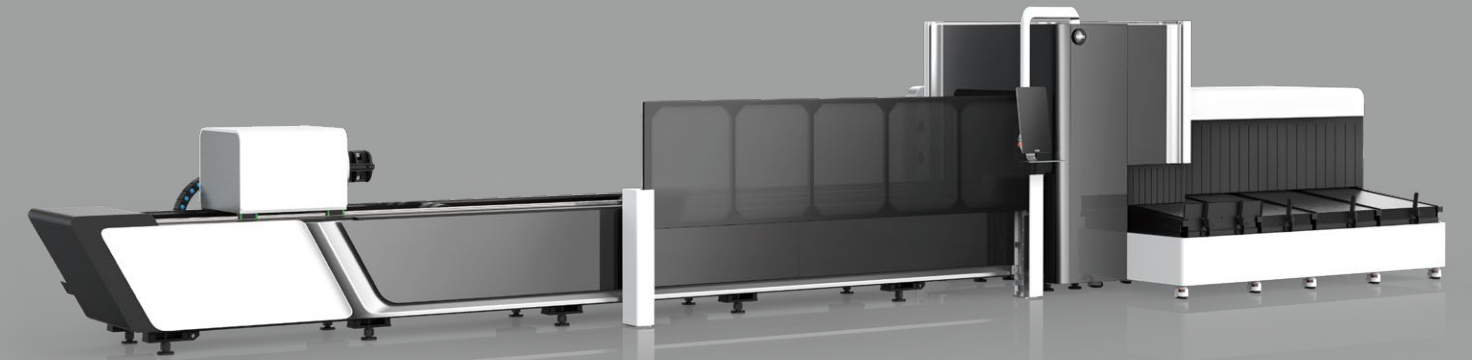


Technical Parameters

Model	X260	X160
Maximum tube length	6500mm	6500mm
Maximum Tube Weight	200Kg 30Kg/m	100Kg 16Kg/m
Laser Power	6000w/3000w/2000w/1500w/1000w	
X/Y-axis positioning accuracy	0.05mm	
X/Y-axis repositioning accuracy	0.03mm	
Max. Chuck rotating speed	140r/min	170r/min

T

Classic Model, one-click tube laser cutting is available with the automated loading and unloading device

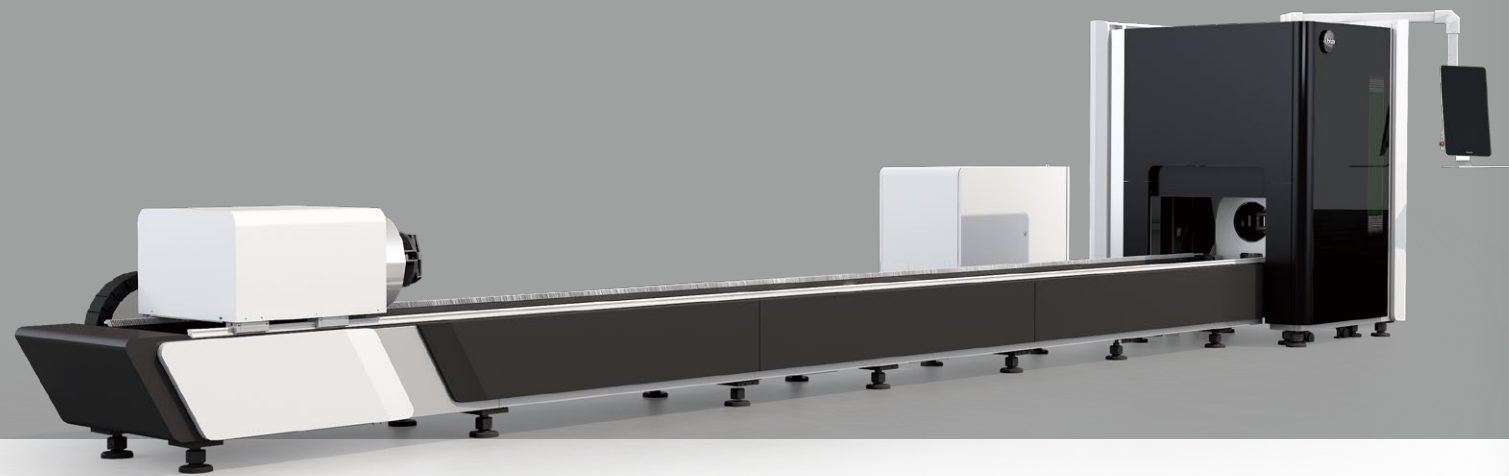


Technical Parameters

Model	T360	T230
Maximum tube length	6500mm	6500mm
Maximum Tube Weight	400Kg 61 kg/m	200Kg 30Kg/m
Laser Power	6000w/3000w/2000w/1000w	
X/Y-axis positioning accuracy	0.05mm	
X/Y-axis repositioning accuracy	0.03mm	
Max. Chuck rotating speed	100/min	120r/min

K

Small and smart tube laser cutting machine, more flexibility, more efficiency

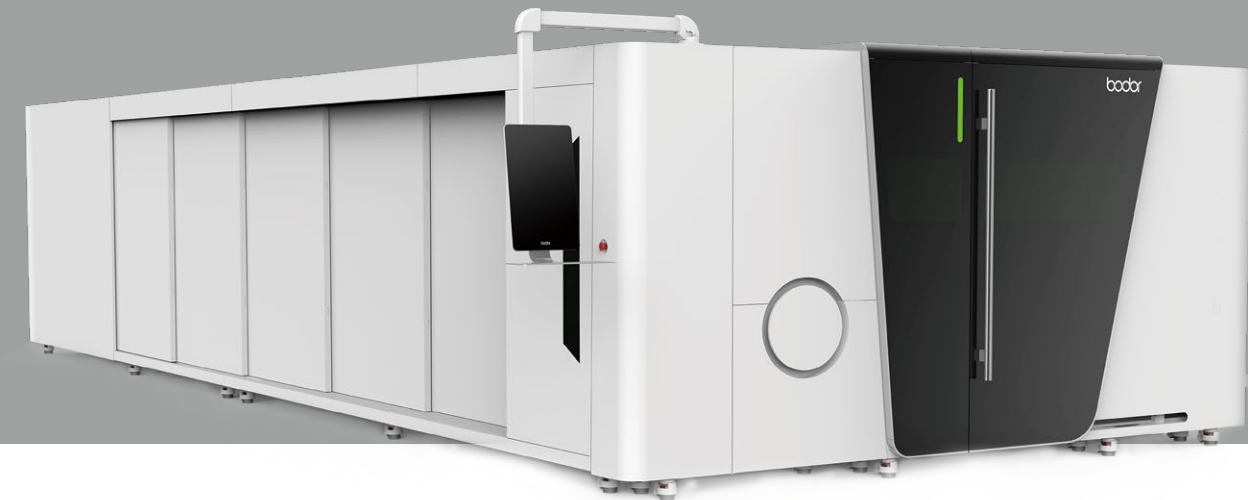


Technical Parameters

Model	K360	K230	K110
Tube size range	Round tube:φ20-φ360mm	Round tube:φ20-φ230mm	Round tube:φ10-φ110mm
	Square tube :□20-□254mm	Square tube :□20-□160mm	Square tube :□10-□110mm
	Rectangular tube:300mm≥Side length≥20mm	Rectangular tube:170mm≥Side length≥20mm	Rectangular tube:110mm≥Side length≥10mm
	Circumscribed circle diameters≤360mm	Circumscribed circle diameters≤230mm	Circumscribed circle diameter≤80mm
Maximum machinable tube length	6300mm		6500mm
Maximum Tube Weight	300Kg 50kg/m	200Kg 33.4Kg/m	80Kg 13.3Kg/m
Laser Power	3000w/2000w/1500w/1000w		
X/Y-axis positioning accuracy	0.05mm		
X/Y-axis repositioning accuracy	0.03mm		
Max. Chuck rotating speed	75r/min	75r/min	130r/min

PT

High-performance Sheet & Tube Laser Cutting Machine
The cast iron bed lays the groundwork for impressive functions



Technical Parameters

Model	P4T	P3T
Working Area	4000mm*2000mm	3048mm*1524mm
Tube size range	Round tube Φ20-Φ230mm	Round tube Φ20-Φ230mm
	Square tube □20 - □160mm	Square tube □20 - □160mm
	Rectangular tube 170mm≥Side length≥20mm	Rectangular tube 170mm≥Side length≥20mm
	Circumscribed circle diameters≤230mm	Circumscribed circle diameters≤230mm
Laser Power	6000w/3000w/2000w/1500w	
X/Y-axis positioning accuracy	0.05mm	
X/Y-axis repositioning accuracy	0.03mm	
Max. Linkage Speed	100m/min	

CT

Sheet & Tube Laser Cutting Machine with Protective Cover
 The machine bed with the mortise-and-tenon joint introduces powerful laser cutting

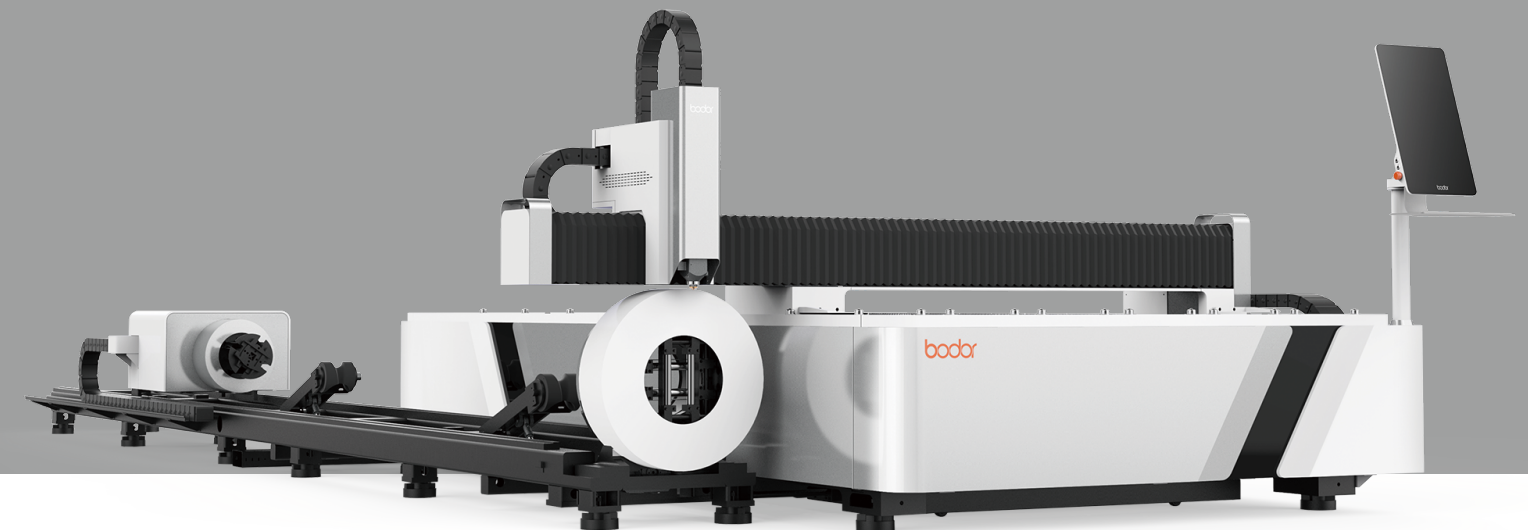


Technical Parameters

Model	C3T
Working Area	3048mm*1524mm
Tube size range	Round tube $\Phi 20-\Phi 230\text{mm}$
	Square tube $\square 20 - \square 160\text{mm}$
	Rectangular tube $170\text{mm} \geq \text{Side length} \geq 20\text{mm}$
	Circumscribed circle diameter $\leq 230\text{mm}$
Laser Power	6000w/3000w/2000w/1500w
X/Y-axis positioning accuracy	$\pm 0.05\text{mm}$
X/Y-axis repositioning accuracy	$\pm 0.03\text{mm}$
Max. Linkage Speed	100m/min

AT

Cost-effective single platform plate and tube laser cutting machine



Technical Parameters

Model	A6T	A4T	A3T
Working Area	6100mm*1524mm	4000mm*1524mm	3048mm*1524mm
Tube size range	Round tube $\Phi 20-\Phi 230\text{mm}$		
	Square tube $\square 20 - \square 160\text{mm}$		
	Rectangular tube $170\text{mm} \geq \text{Side length} \geq 20\text{mm}$		
	Circumscribed circle diameter $\leq 230\text{mm}$		
Laser Power	3000w/2000w/1500w/1000w		
X/Y-axis positioning accuracy	$\pm 0.05\text{mm}$		
X/Y-axis repositioning accuracy	$\pm 0.03\text{mm}$		
Max. Linkage Speed	91m/min		

iTrans

Fully automated loading and unloading device



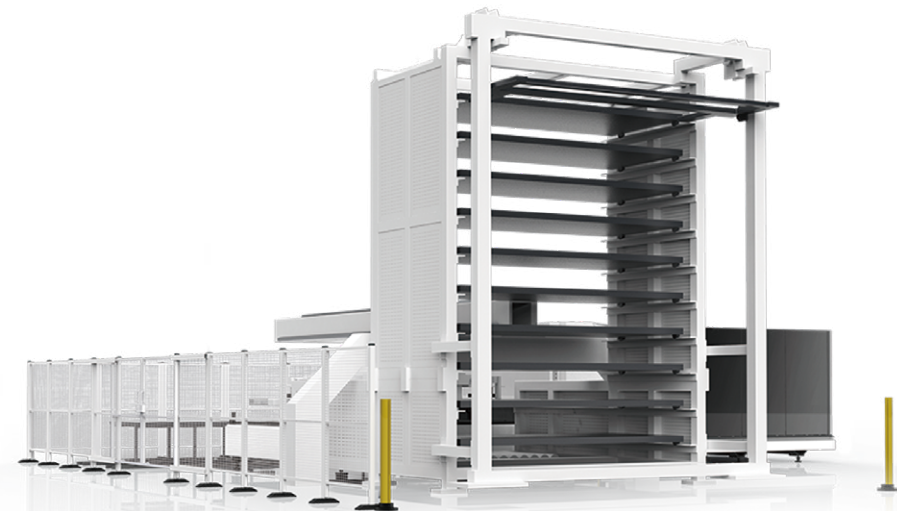
iLift

Latter Bed Ejector Rod



iTrans Tower

Intelligent loading and unloading, multi-layer storage racks designed to save space



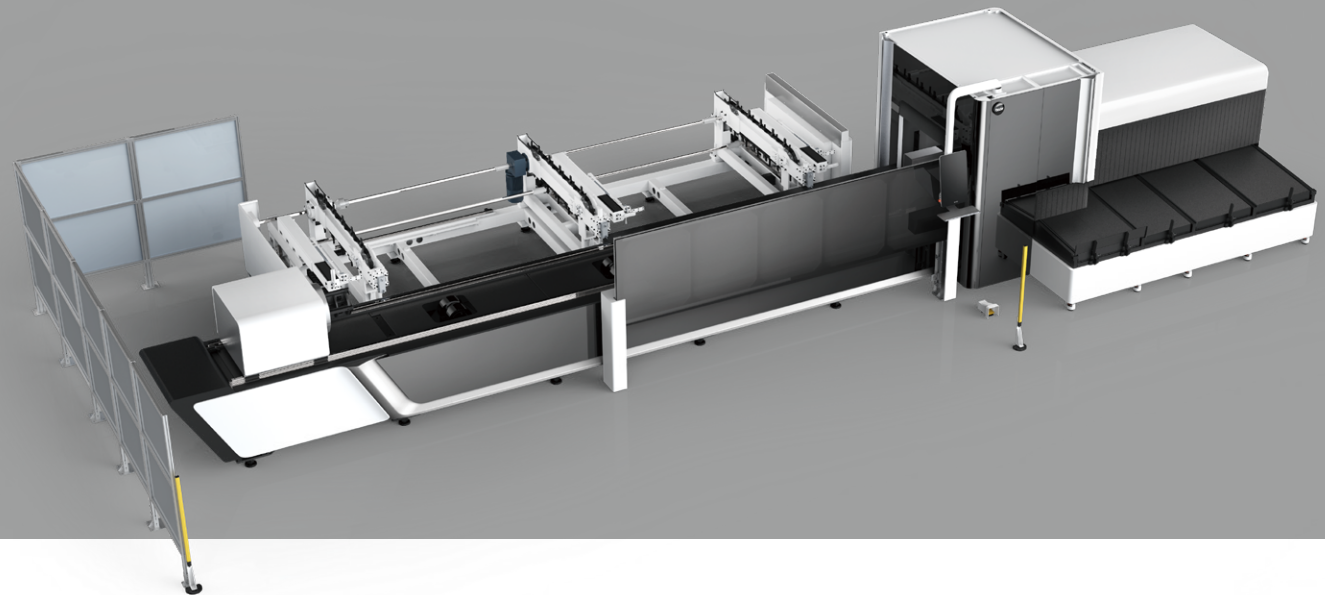
iLoader

Automated loading device



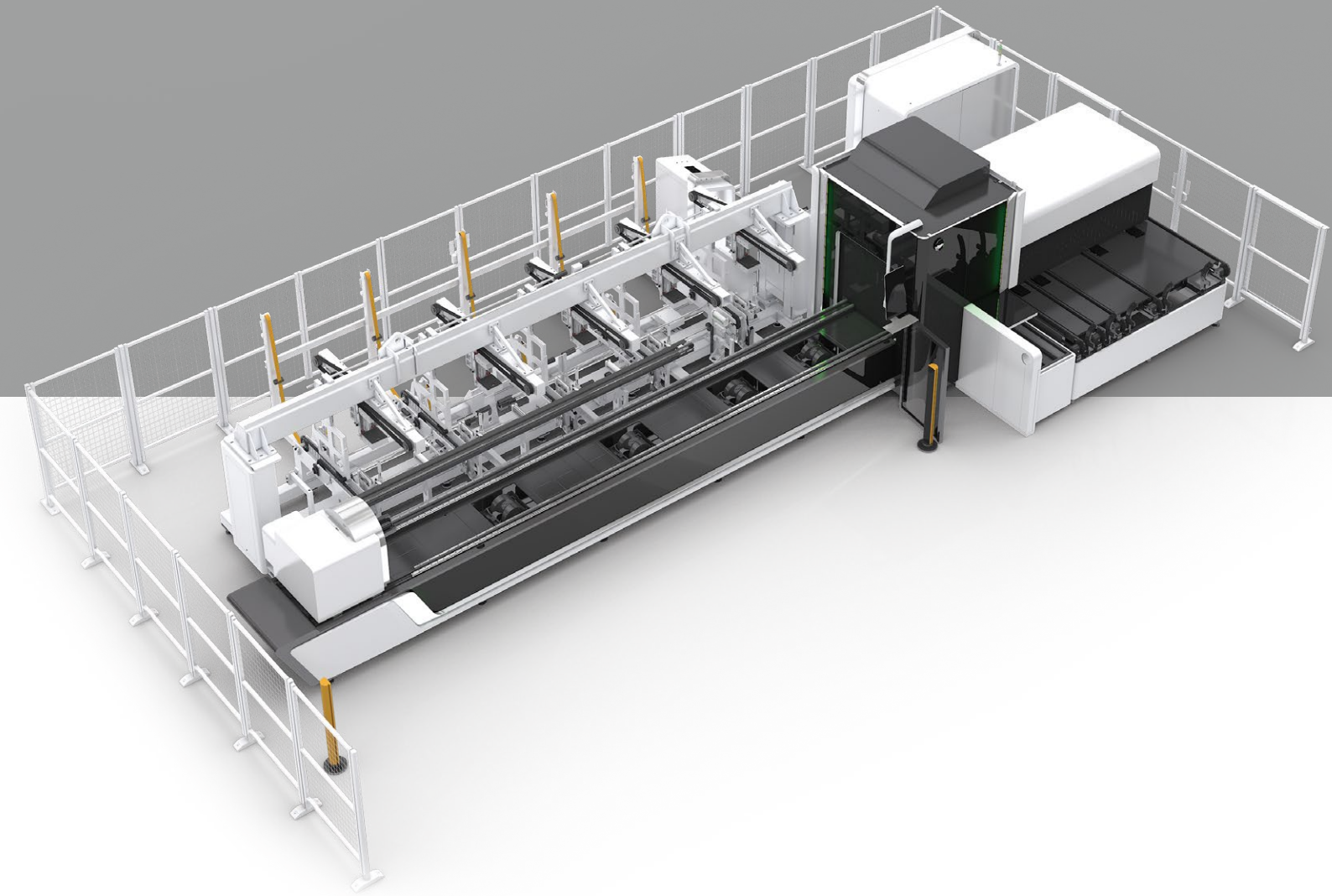
T-Loader

Multiple tubes but onetime placement and processing with no manual interference, helping load automatically and save manpower.



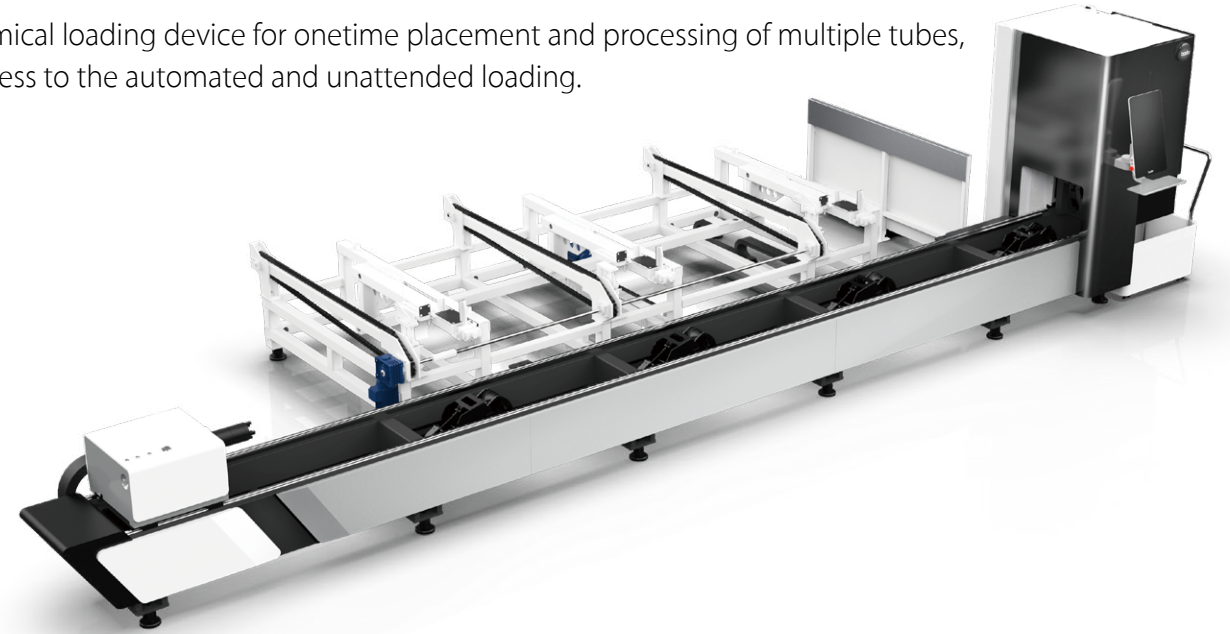
T-trans

For batch processing, the automatic loading and onetime material bundling allow the machines to achieve an unattended process and less manpower.



T-Loader eco

The economical loading device for onetime placement and processing of multiple tubes, making access to the automated and unattended loading.



CUTTING SAMPLES



PROCESS PARAMETERS

Reference table of laser cutting process parameters (by O₂ and N₂)

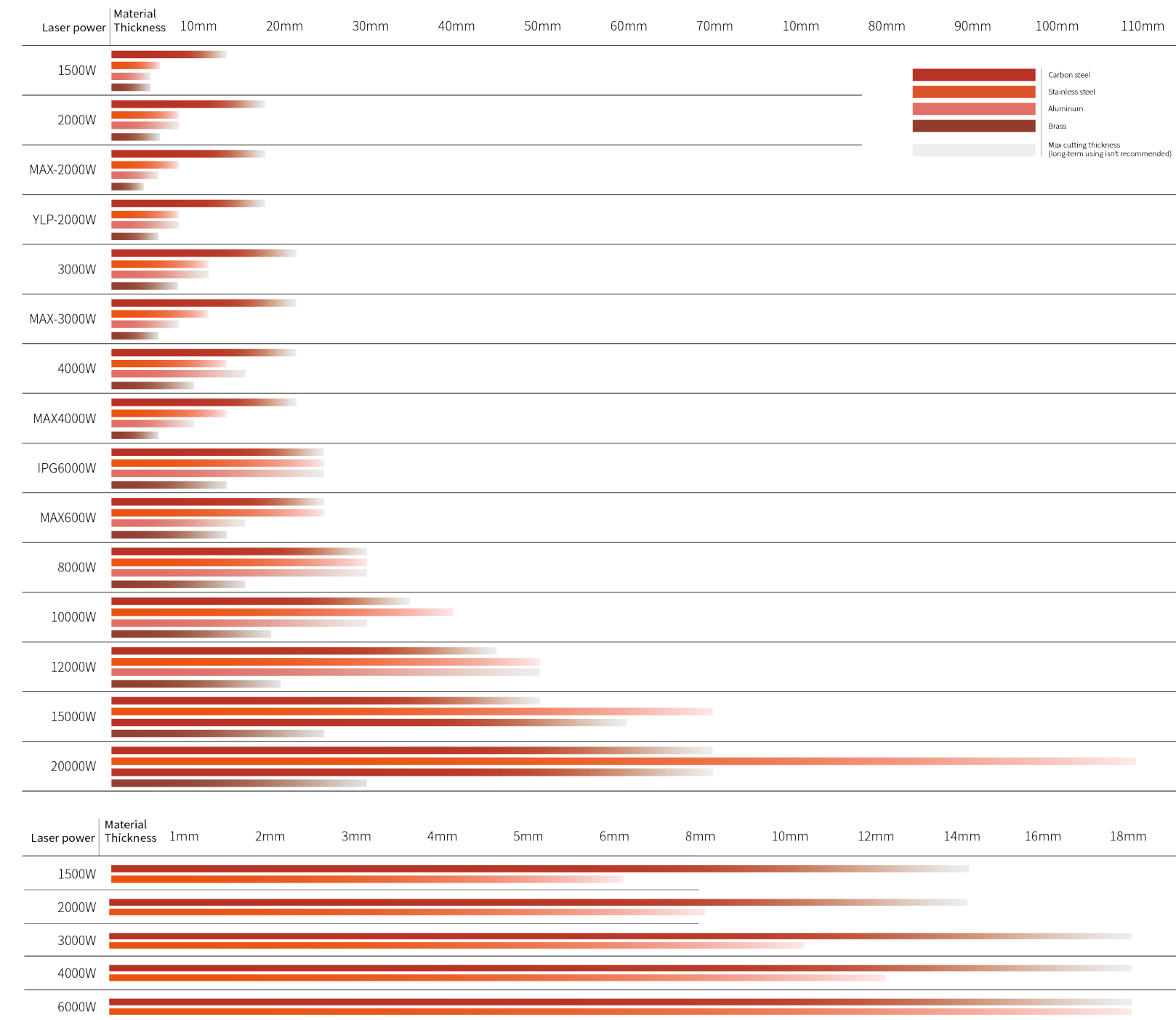
Material	Thickness	20000W	15000W	12000W	6000W	3000W	2000W	1500W	1000W
		speed m/min	speed m/min	speed m/min	speed m/min	speed m/min	speed m/min	speed m/min	speed m/min
Carbon steel (Q235A) O ₂	1	9-11	9-11	9-11	8-10	8.0-10	8.0-10	8.0-10	8.0-10
	2	5-7.5	5-7.5	5-7.5	5-7.5	4.8-7.5	4.7-6.5	4.5-6.5	4.0-6.5
	3	3.5-5.5	3.5-5.5	3.5-5.5	3.5-5	3.3-5.0	3.0-4.8	2.6-4.0	2.4-3.0
	4	3.5-5	3.5-5	3.5-5	3.0-4.5	3.0-4.2	2.8-3.5	2.5-3.0	2.0-2.4
	5	3.3-4.8	3.3-4.8	3.3-4.8	3.0-4.2	2.6-3.5	2.2-3.0	2.0-2.5	1.5-2.0
	6	3.0-4.2	3.0-4.2	3.0-4.2	2.5-3.5	2.3-3.2	1.8-2.6	1.6-2.2	1.4-1.6
	8	2.5-3.9	2.5-3.8	2.5-3.8	2.2-3.2	1.8-2.6	1.2-1.8	1.0-1.4	0.8-1.2
	10	2.0-3.8	2.2-3.6	2.2-3.6	1.8-2.5	1.2-2.0	1.1-1.3	0.8-1.1	0.6-1.0
	12	1.6-3.7	1.2-3.6	1.2-3.5	1.2-2.1	1.0-1.6	0.9-1.2	0.7-1.0	0.5-0.8
	14	1.5-3.6	1.5-3.5	1.7-3.3	1.2-1.8	0.9-1.2	0.8-1.0	0.5-0.7	
	16	1.4-3.5	1.2-3.5	1.2-3.1	0.8-1.5	0.7-1.0	0.6-0.8		
	18	1.4-3.4	1.2-3.0	1.0-2.7	0.6-1.2	0.6-0.8	0.5-0.7		
	20	1.5-3.3	1.2-2.7	0.6-2.4	0.5-0.8	0.5-0.8			
	25	1.0-2.8	0.8-1.8	0.5-1.6	0.3-0.55				
	30	0.8-2.0	0.6-1.4	0.3-1.0					
	35	0.6-0.9	0.4-0.7	0.3-0.7					
	40	0.5-1.0	0.3-0.5	0.2-0.4					
	45	0.3-0.5	0.2-0.5	0.2-0.3					
50	0.2-0.5								
60	0.2-0.4								
Stainless steel (201) N ₂	1	72-100	72-100	70-85	42-52	30-35	24-50	20-27	18-25
	2	50-75	45-70	40-66	20-33	13-21	9.0-15	8.0-12	5-7.5
	3	38-55	38-50	35-45	15-22	6.0-10	4.8-7.5	3.0-5.0	1.8-2.5
	4	25-33	25-35	20-32	10-15	4.0-6.0	3.2-4.5	1.5-2.4	1.2-1.3
	5	22-30	20-30	18-25	7.0-12	3.0-5.0	2.0-2.8	0.7-1.3	0.6-0.7
	6	17-25	15.0-25.0	12-15	4.8-9.0	2.0-4.0	1.2-2.0	0.7-1.0	
	8	12-18	8.0-12.0	8-12	3.0-4.0	1.5-2.0	0.7-1.0		
	10	8.0-12.0	6.0-10.0	6.0-8.0	1.6-2.5	0.6-0.8			
	12	6.0-8.5	4.0-6.0	4.0-5.5	0.8-1.5	0.4-0.6			
	14	5.0-7.0	3.5-5.5	3.0-5.0	0.6-1.2				
	16	3.0-5.0	2.5-3.0	2.2-2.8	0.5-1.0				
	18	1.8-2.7	1.2-2.2	1.2-2.0	0.4-0.8				
	20	1.5-3.2	1.3-1.8	1.0-1.6	0.3-0.6				
	25	1.5-2.0	0.6-1.2	0.5-0.8					
	30	1.0-1.5	0.5-1.0	0.3-0.6					
35	0.4-0.8	0.4-0.8	0.3-0.5						

Material	Thickness	20000W	15000W	12000W	6000W	3000W	2000W	1500W	1000W
		speed m/min	speed m/min	speed m/min	speed m/min	speed m/min	speed m/min	speed m/min	speed m/min
Stainless steel (201) N ₂	40	0.3-0.6	0.3-0.6	0.3-0.5					
	45	0.2-0.6	0.2-0.5						
	50	0.2-0.5	0.1-0.5						
	60	0.1-0.3	0.1-0.2						
Aluminum N ₂	1	70-100	70-100	60-85	42-55	25-38	20-30	10-20	6.0-10
	2	40-70	40-55	38-50	20-40	10-18	10-15	5.0-7.0	2.8-3.6
	3	35-60	35-45	30-40	15-25	6.5-8.0	5.0-7.0	2.0-4.0	
	4	30-43	30-40	20-30	9.5-12	3.5-5.0	3.5-5.0	1.0-1.5	
	5	20-32	20-30	15-25	5.0-8.0	2.5-3.5	1.8-2.5		
	6	15-26	15-24	10-15	3.8-5.0	1.5-2.5	1.0-1.5		
	8	10-18	8.0-12.0	7.0-12	2.0-2.5	0.7-1.0			
	10	6.0-10.0	5.0-9.0	4.5-8.0	1.0-1.5	0.4-0.7			
	12	4.0-6.0	4.0-6.0	4.0-5.0	0.8-1.3				
	14	2.2-3.2	2.5-3.2	1.8-2.7	0.9-1.2				
	16	2.0-3.0	2.0-3.0	1.5-2.5	0.5-0.8				
	18	1.5-2.0	1.5-1.9	1.0-1.8	0.5-0.7				
	20	1.3-1.8	1.3-1.8	0.9-1.5	0.5-0.7				
	25	0.6-1.2	0.6-1.2	0.6-0.9					
	30	0.5-1.0	0.5-1.0	0.3-0.8					
	35	0.3-0.8	0.3-0.8	0.3-0.6					
	40	0.3-0.5	0.3-0.5	0.3-0.4					
	Brass N ₂	1	65-75	60-70	55-65	35-45	20-35	12-18	8.0-13
2		40-60	40-45	38-42	20-30	6.0-10	6.0-8.5	3.0-4.5	2.8-3.6
3		25-40	20-35	18-30	12-18	4.0-6.0	2.5-4.0	1.5-2.5	
4		20-35	18-30	15-20	8.0-12.0	3.0-5.0	2.0-3.0	1.0-1.6	
5		18-25	15-20	10-15	6.0-8.0	1.5-2.0	0.9-1.2		
6		10-18	8-15	6.0-8.0	3.0-6.5	1.0-1.8			
8		8.0-10.0	8.0-10.0	5.0-7.0	1.6-2.2				
10		5.0-9.0	5.0-6.5	4.5-6.0	0.8-1.2				
12		2.8-4.2	2.8-4.2	2.4-4.0	0.3-0.5				
14		1.5-5.0	1.0-1.8	0.8-1.5					
16		1-2.4	0.8-1.5	0.6-1.2					
18		0.8-2.2	0.6-0.8	0.4-0.6					
20		0.4-2.0	0.4-0.6						
25		0.3-0.5							

CUTTING CAPACITY

Laser cutting air process parameter reference table

Material	Thickness	20000W	15000W	12000W	6000W	3000W	2000W	1500W	1000W	
		speed m/min	speed m/min	speed m/min	speed m/min	speed m/min	speed m/min	speed m/min	speed m/min	
Carbon steel (Q235A)	1	50-70	50-70	45-70	42-52	40-45	27-30	27-30	9-12	
	2	45-55	30-40	30-35	20-25	12-15	10-12	8-10	6-8	
	3	30-35	28-33	25-30	10-20	6-8				
	4	28-32	25-30	22-28	8-15					
	5	25-30	22-28	15-20	6-10					
	6	20-24	17-20	13-17	5-8					
	8	10-15	9-13	8-12						
	10	8.0-12	6-8	5-7						
	12	6.0-8.0	4-7	3-5						
	14	5.0-6.5	3.5-5	2.5-4						
	16	4.5-5.0	2.5-4	2-3						
	18	3.0-3.5	1.5-2.5							
	20	2.2-2.8								
	25	1.0-1.5								
	Stainless steel (304)	1	60-70	50-70	45-70	38-60	35-50	25-30	20-30	20-25
		2	40-50	35-45	30-42	22-38	15-25	11-15	8.0-12	6-8
		3	35-45	30-42	22-38	15-25	8-10	5-7	3-5	1.5-2
		4	25-32	22-28	20-28	12-16	5.0-8.0	3.5-5.0	1.5-2.8	1.2-1.5
		5	22-28	20-25	15-18	5-8	3.5-5.0	2.0-2.5	1.2-1.5	
		6	15-22	13-18	12-15	4.8-9.0	2.0-4.0	1.5-2.0		
8		12-16	9.5-13	8.5-12	3.0-5.5	1.5-2.0				
10		10-12	7-9	6.5-8.5	2.0-3.5	0.6-1				
12		7.0-9.0	5-7.5	4.5-6.0	1.2-2.3					
14		6.0-8.0	3-4.5	2.5-3.5	0.8-1.6					
16		5.0-6.0	2.5-3.5	1.5-2.6	0.8-1.4					
18		3-4	2.2-3.0	1.2-2.0	0.6-1.0					
20		2.5-3.5	1.5-2.3	1.1-1.8						
25		1.5-1.8	1-1.7	0.65-1.1						
30		1.0-1.5	0.5-1	0.3-0.6						
35		0.6-0.9	0.4-0.6	0.2-0.4						
40		0.45-0.65	0.1-0.3	0.1-0.3						
45		0.20-0.25	0.1-0.3							
50		0.15-0.20								
Aluminum		1	50-70	50-70	50-70	45-50	25-35	17-18	10-15	6.0-8.0
	2	35-45	46-62	45-60	40-49	10-15				
	3	30-35	40-56	35-55	28-32					
	4	30-45	22-32	20-30	20-28					
	5	18-26	16-25	15-25	8-10					
	6	20-28	18-25	15-24	6-7					
	8	6-9	6-8	6-8	3-4					
	10	5.0-6.0	6-7	5-7	2.8-3					
	12	3.0-4.0	2.5-5	2-3.1	1.5-2					
	14	2.8-3.2	2-3.5	1.5-2.1	0.8-1					
	16	2.5-3.0	1.3-1.8	1.2-1.5	0.3-0.4					
	18	1.1-1.4	0.9-1.3	0.8-1.2						
	20	0.7-1.1	0.8-1.2	0.8-1.2						
	Brass	1	40-60	50-70	50-70	45-50	20-35	10-16	8.0-13	6.0-8.0
2		30-45	40-62	40-60	30-40	6.0-10	4.5-7.5	3.0-4.5	2.8-3.6	
3		25-35	25-35	20-28	14-17	4.0-6.0	2.5-4.0	1.5-2.5		
4		15-20	16-28	16-27	8.0-10	3.0-5.0	1.5-2.0	1.0-1.6		
5		12-15	15-26	15-25	6.0-8	1.5-2.0	0.9-1.2			
6		10-13	9-12	8-10	4.5-6					
8		8-9	7-8.5	6-9	3-4					
10		4.5-5.5	4-5	2-3	1.5-2					
12		3.0-3.5	2.5-3	3-4.6	1.3-1.7					
14		1.8-2.2	1.7-2	2-3.2	1.0-1.2					
16		1.5-1.8	1.2-1.5	0.8-1.2	0.6-1					
18		1.0-1.5	0.9-1.3	0.5-0.7	0.4-0.6					
20	0.6-0.9	0.4-0.7	0.4-0.6							



Above data is only for reference

BODOR QUALITY

Bodor believes "Details make perfect". In order to ensure that Bodor equipment can perfectly serve customers and create maximum value for customers, every link or a small part of the equipment needs to obtain the strict European standard QC inspection to ensure the accuracy in detail.



12 Test Indicators

- | | | | | | |
|------------------------|--------------------------|-------------------------------|---------------------------|-------------------------|------------------------|
| 01
Flatness | 02
Solidness | 03
Precision | 04
Straightness | 05
Fineness | 06
Stiffness |
| 07
Planeness | 08
Parallelism | 09
Perpendicularity | 10
Skillfulness | 11
Durability | 12
Stability |



Inspection Process



01 Large Gantry Milling



02 Heat aging treatment



03 Detection precision



04 Laser detection guide line



05 Small component detection



06 Body hardness test



07 Parallel detection



08 Detect rack parallelism



09 Test bed verticality



10 Aging test







11 Performance testing



12 Laser cutting test

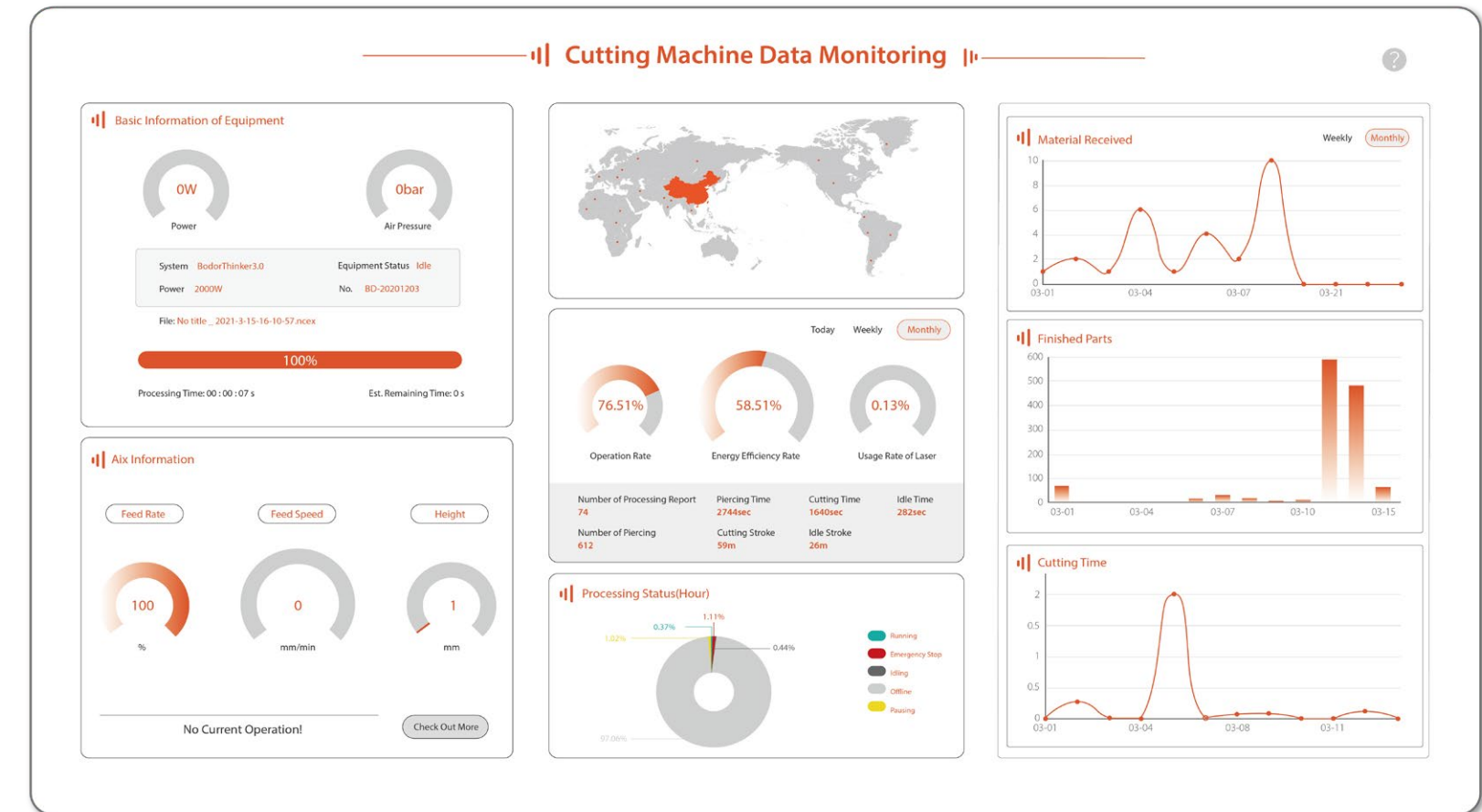


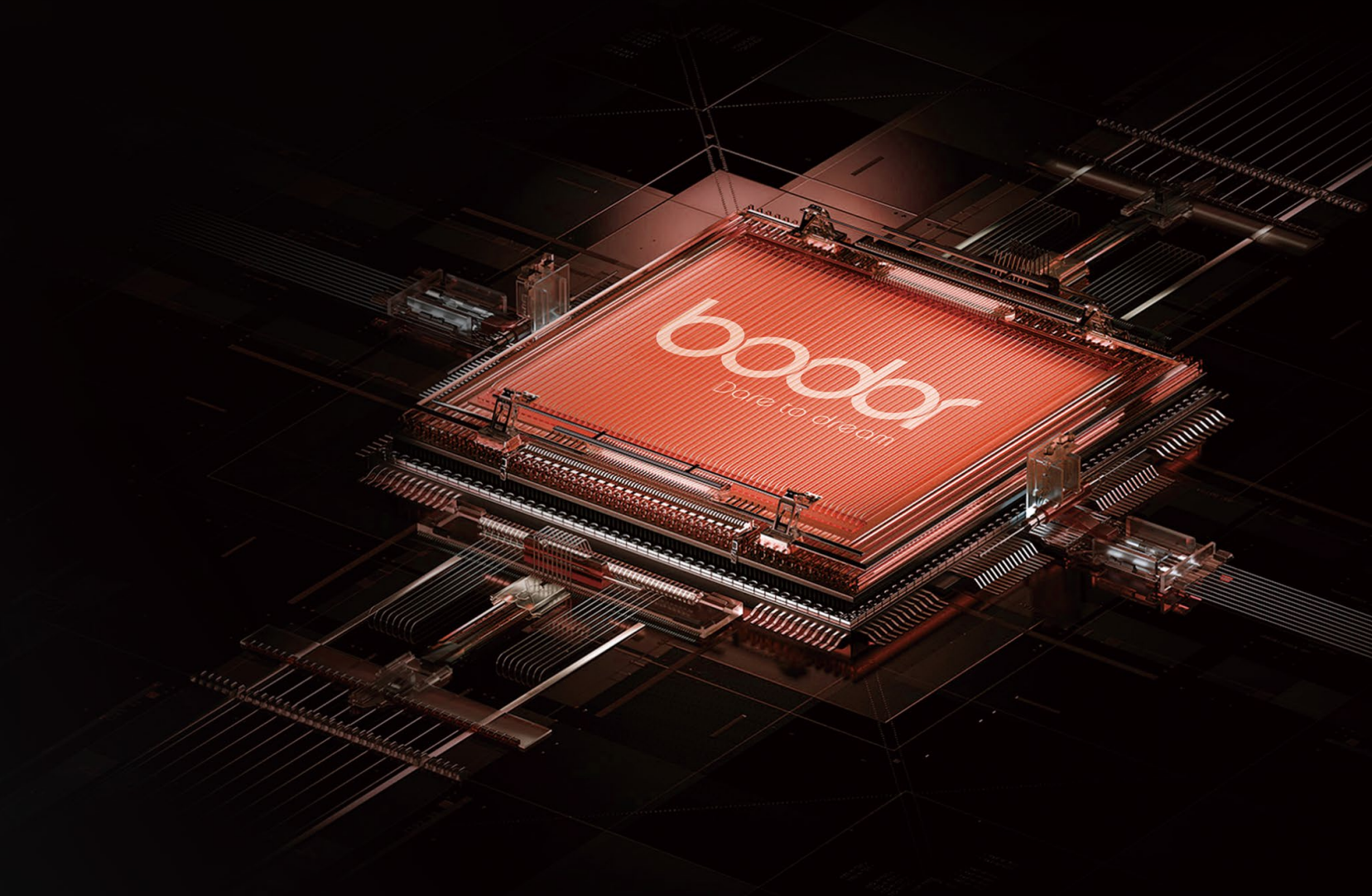
 Technical Center  Global branches  Service Team  Offices

BODOR CLOUD

AI intelligent Cloud service platform, connecting customer and manufacturer, carries :

- Daily equipment status management (processing data, report forms)
- Alarm and maintenance reminder
- Cloud transmission for processing programs
- Remote online service access with one key
- Real-time push of the latest cutting process





Change Human Life with Laser Technology